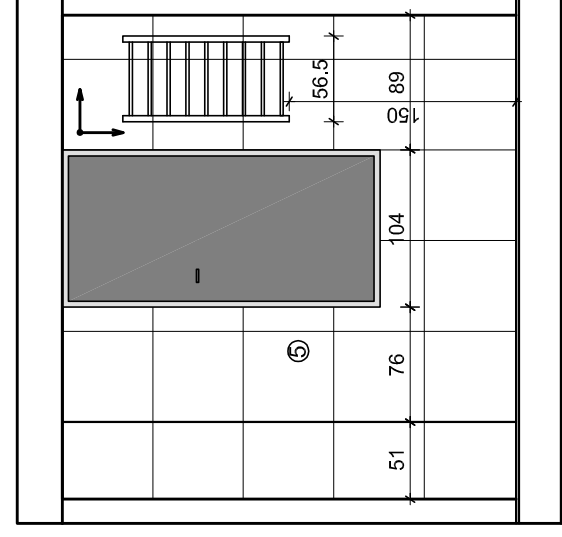
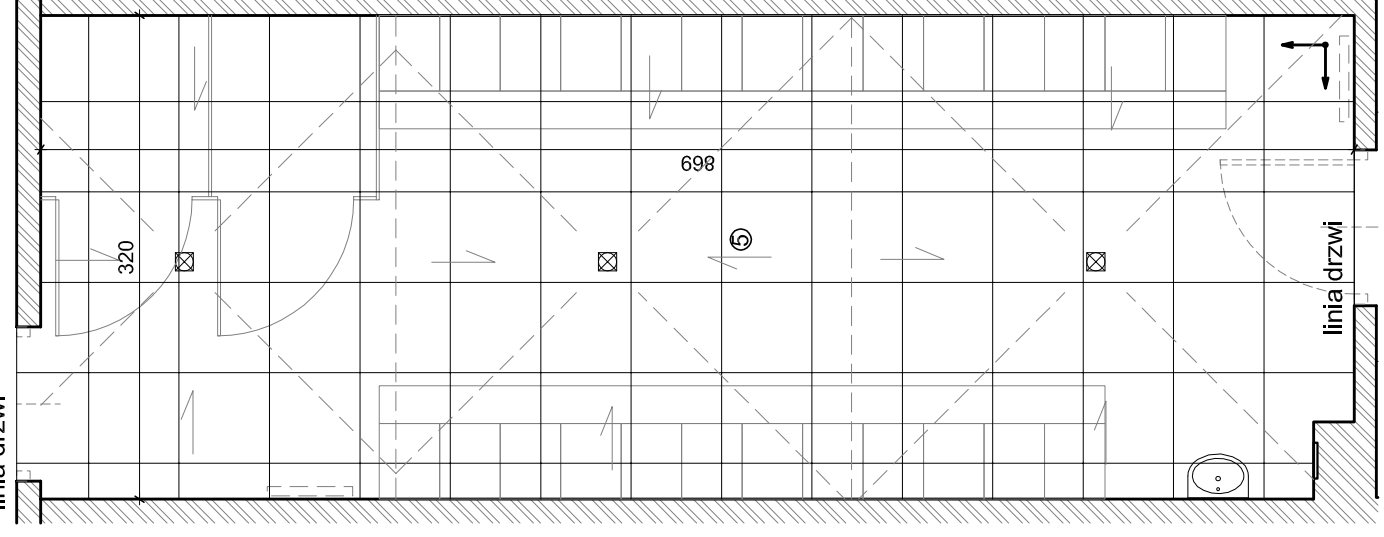
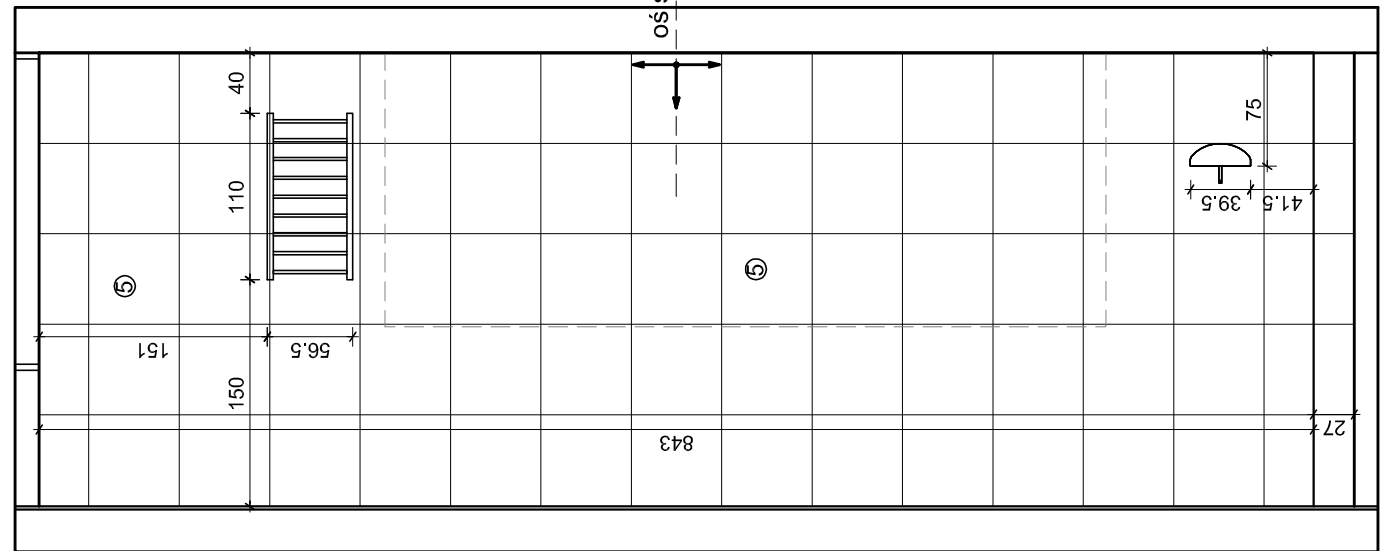
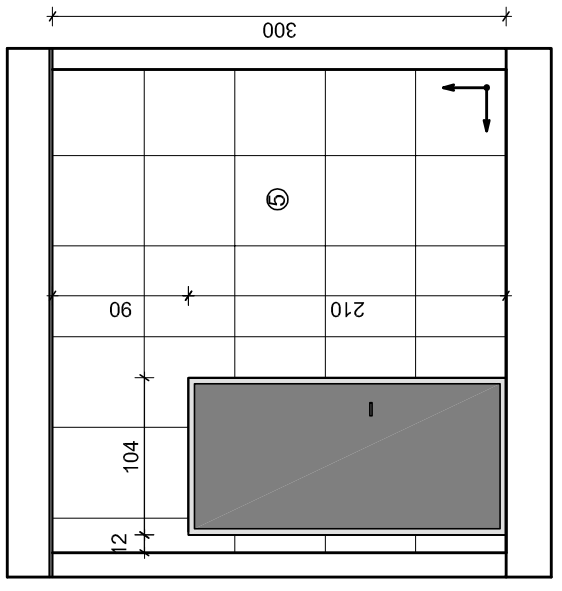
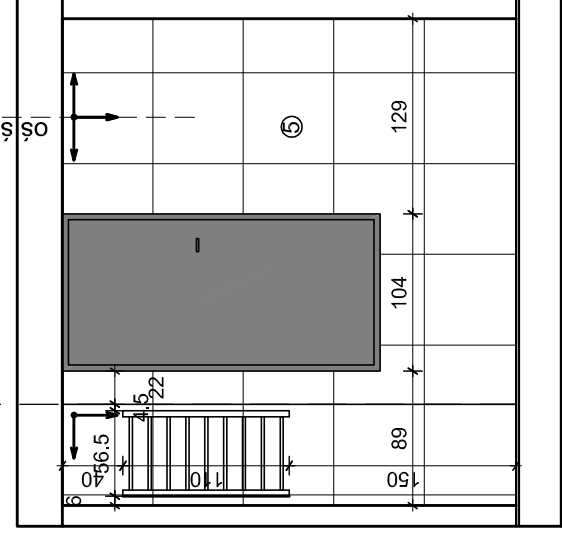
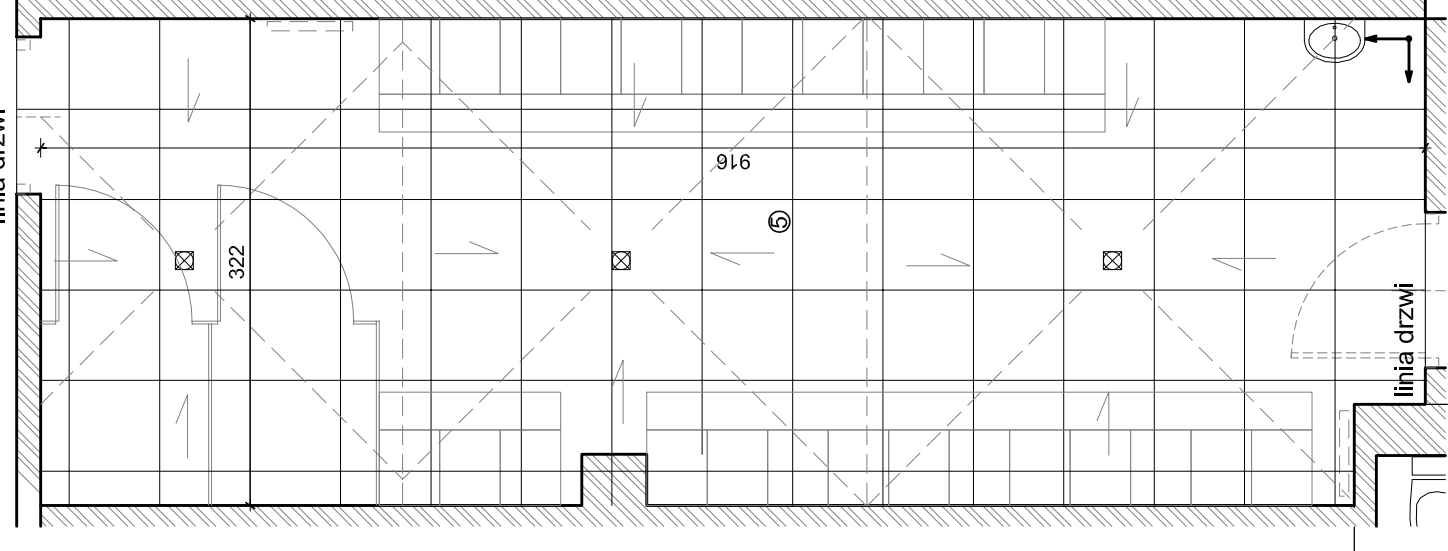
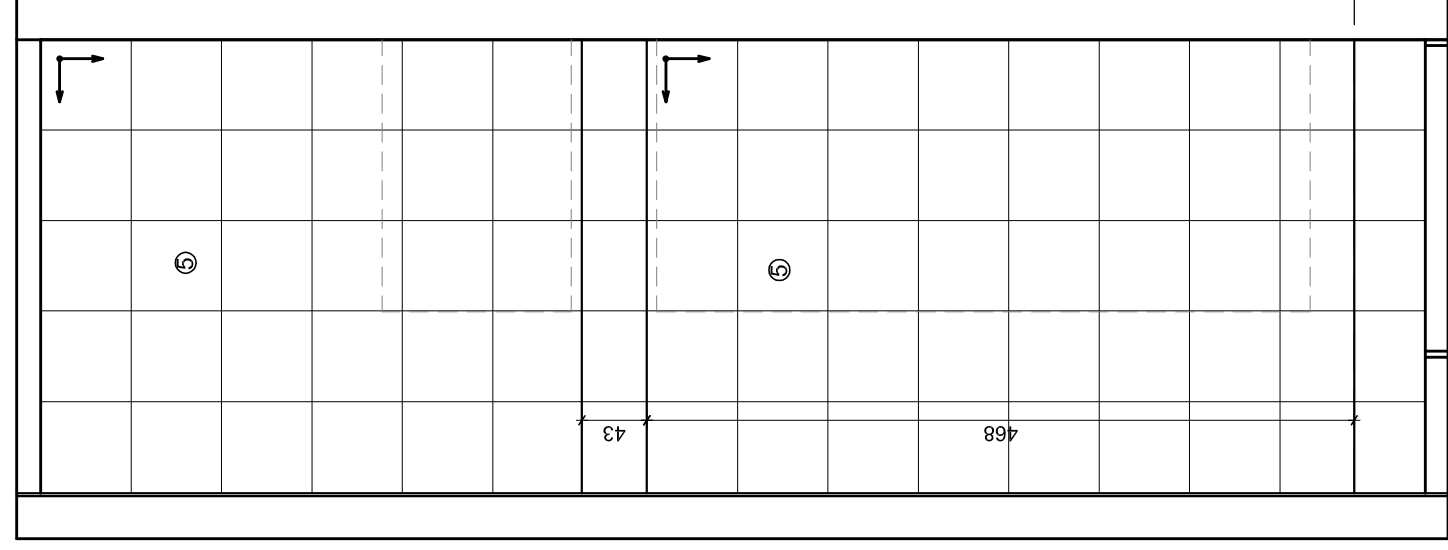
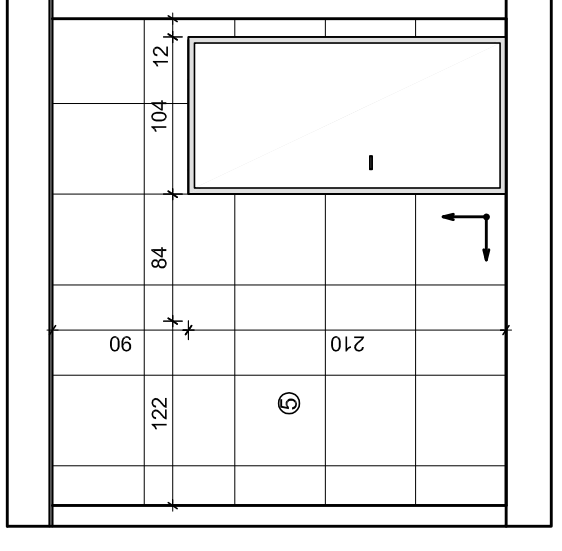


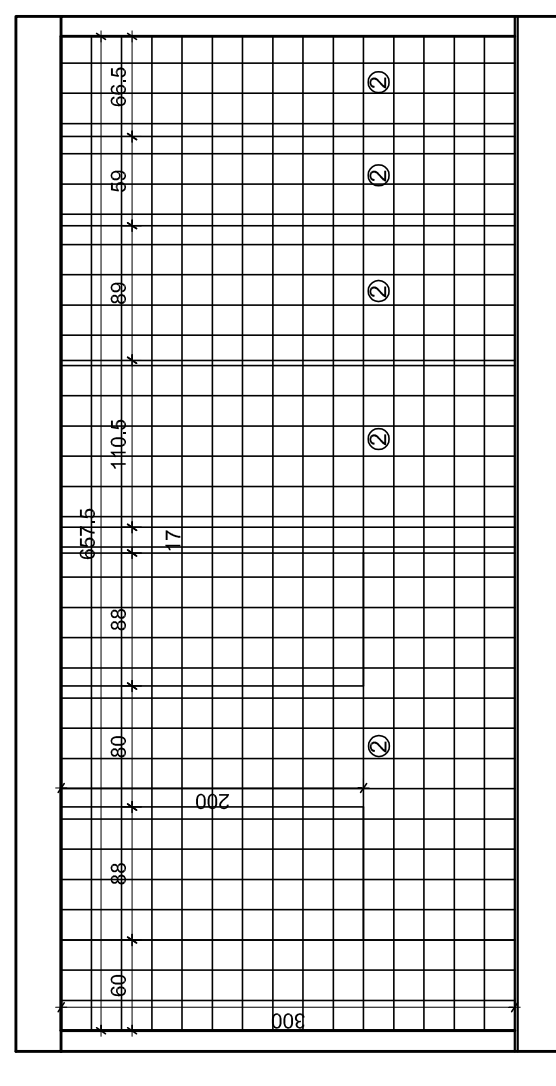
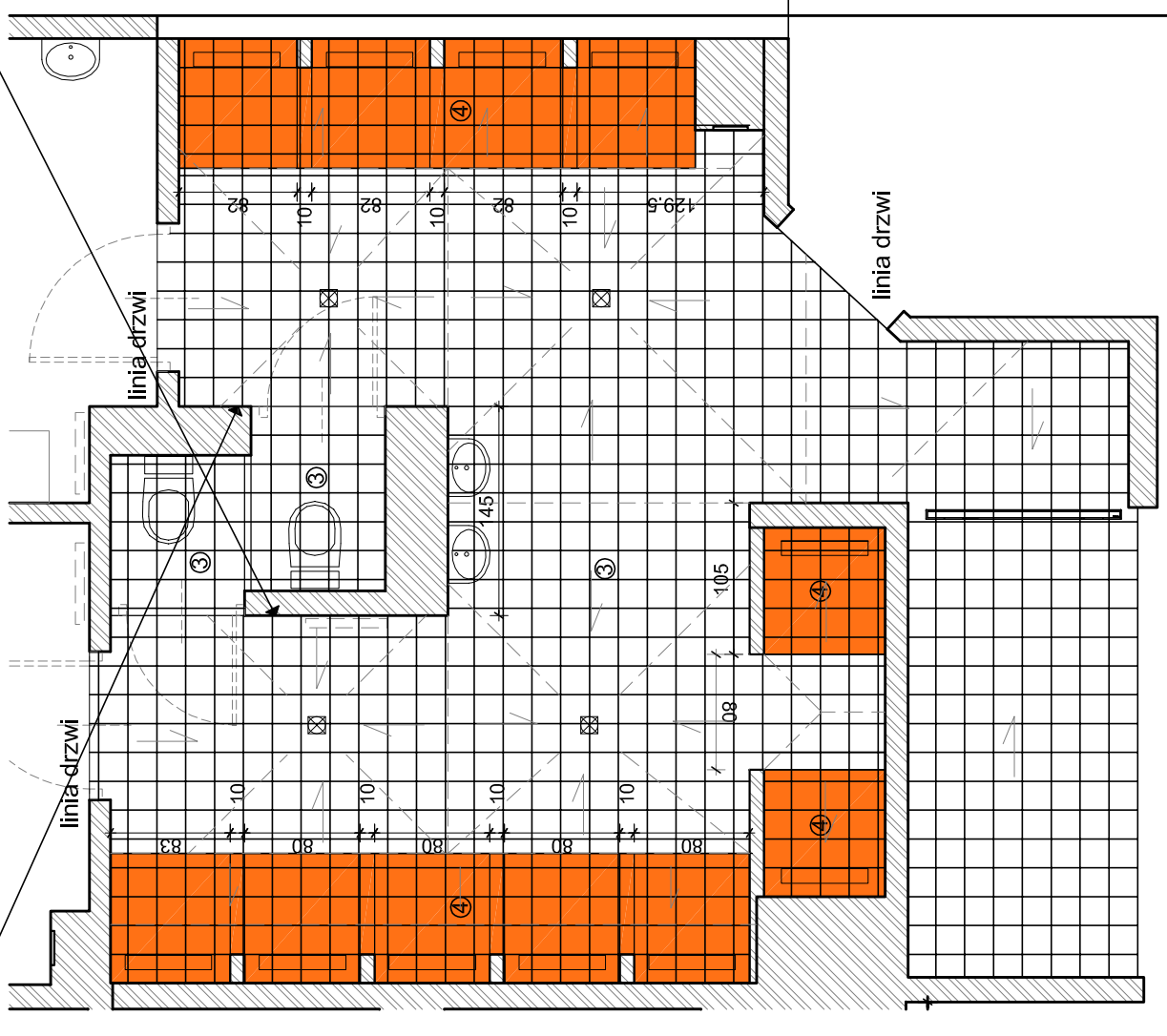
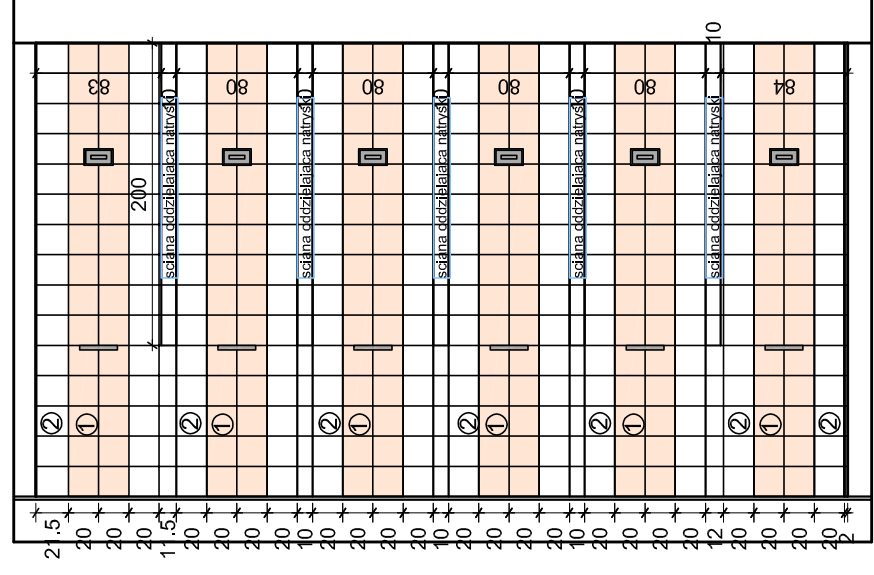
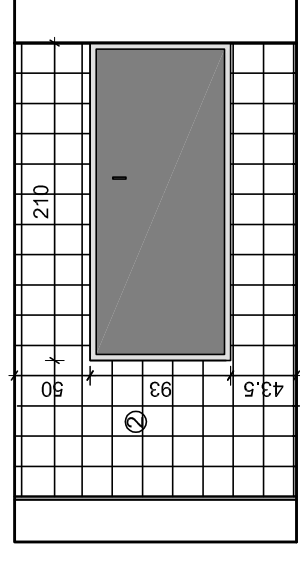
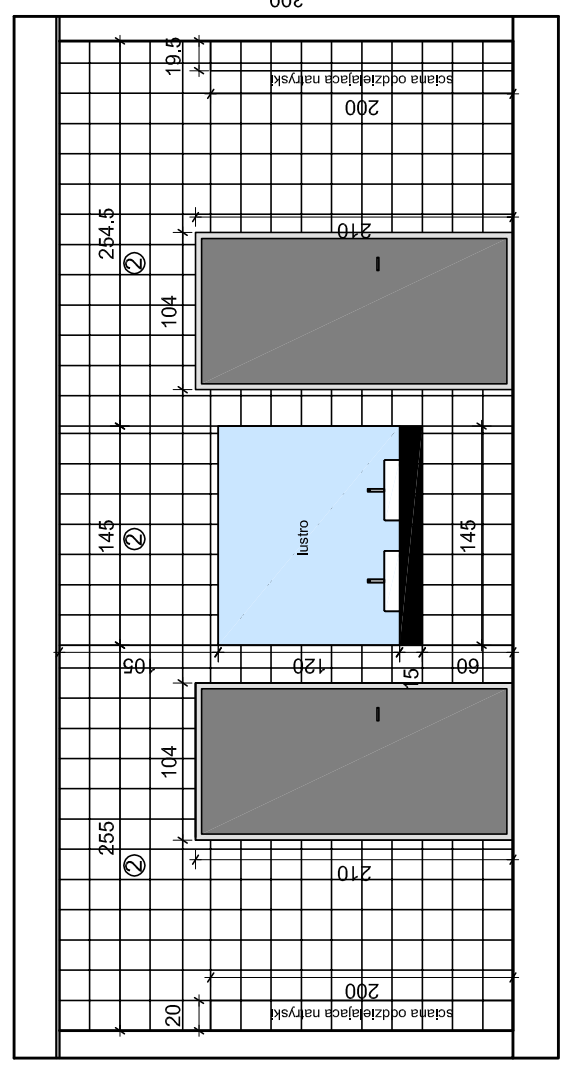
SZATNIA 1



SZATNIA 2



ZESPÓŁ NATRYSKÓW



- kierunek rozkładania kafli
- spadek do odpływu 2%
- odpływ istniejący
- odpływ liniowy

- ① pastel pomarańczowy -polysk 13,5 m²
- ② pastel czarny -polysk 115 m²
- ③ gres- mono czarny polmat 30 m²
- ④ gres- mono pomarańczowy polmat 9 m²
- ⑤ gres- neutral grey1-mat 200 m²

malowanie farbą zmywalną:
sufity

